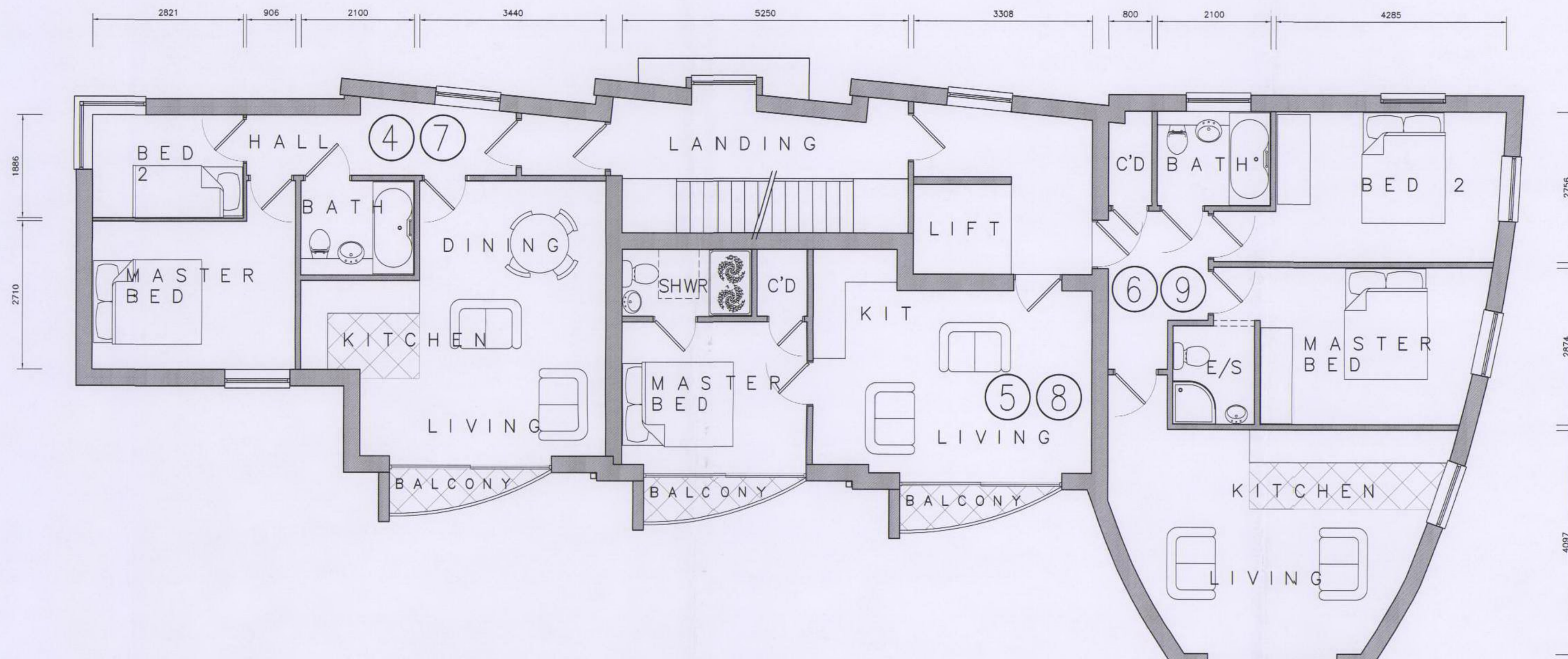
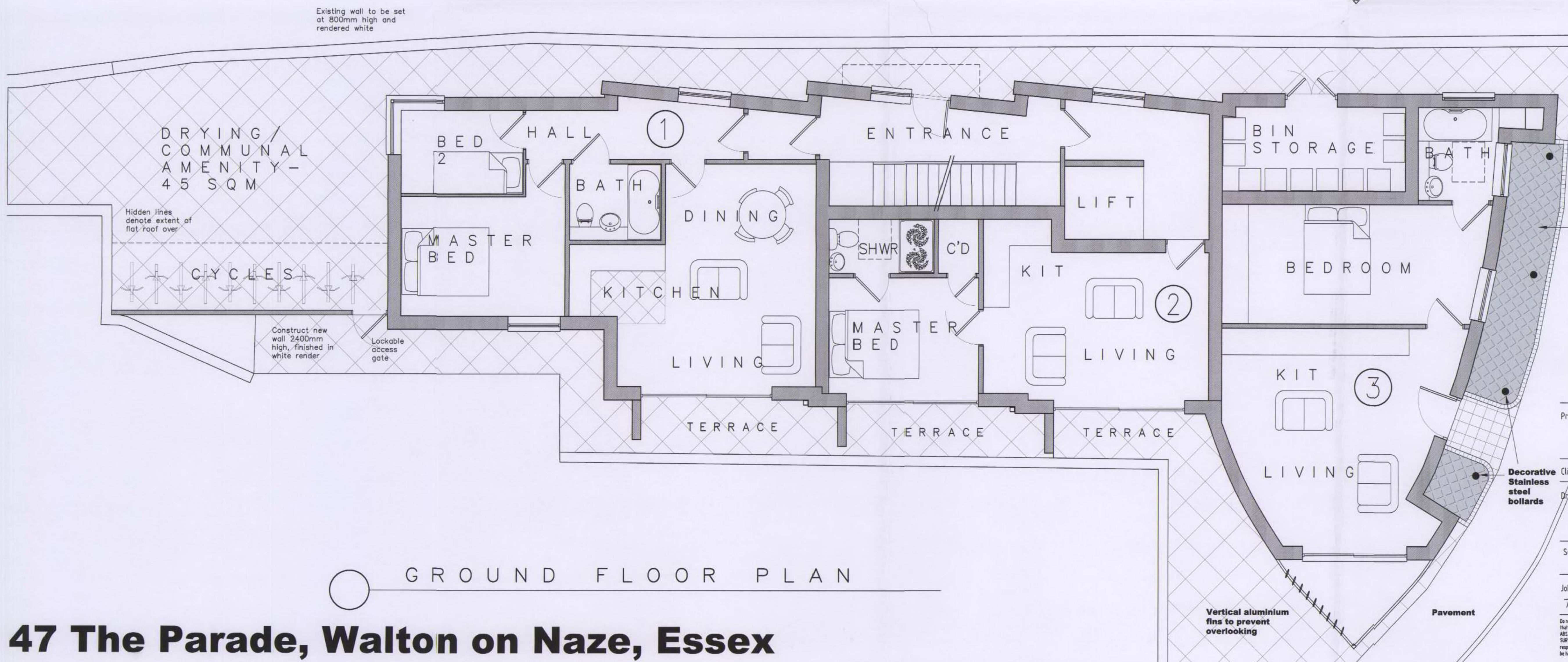




Example decorative bollards



FIRST AND SECOND FLOOR PLAN



GROUND FLOOR PLAN

47 The Parade, Walton on Naze, Essex

Pavement

Granite set hard landscaping

Decorative stainless steel bollards

Vertical aluminium fins to prevent overlooking

Pavement

abs
 Architectural
 Building
 Services
 (Essex) Ltd

3 The Marketplace, Station Road
 Thorpe Le Soken, Essex, CO16 0HQ
 Tel - 01255 861727
 Fax - 01255 861737
 Email - absessexltd@btconnect.com
 Web - www.absessexltd.co.uk

- REV F - Gate added to cycle store (AJ 26th Feb 2009)
- REV E - Residential unit reinstated, articulation to elevation (AJ 18th Feb 2009)
- REV D - Commercial unit removed, bins and cycles relocated (AJ 18th Dec 2008)
- REV C - Flat altered to commercial unit (AJ 19th August 08)
- REV B - Flat 3/6 & 9 balconies altered to avoid overlooking (AJ 30th July 08)
- REV A - Scheme revision (AJ June 08)

Project **New Development
 47 The Parade
 Walton on Naze, Essex**

Client **Mr T. Sarno & Ms D. Carson**

Drawing **Floor Plans
 As proposed
 Planning Submission**

Scale **1:50** Date **May 08** Drawn by **AJ**

Job No **135** Drawing No **/ 02 / F** Revision

Do not scale from this drawing. All dimensions to be checked on site prior to commencement of works. Check that this drawing is the latest revision. If in doubt ASK. This drawing is copyright. Refer any discrepancy to ABS. THIS PLAN HAS BEEN PREPARED FROM INFORMATION PROVIDED BY THE CLIENT AND FROM ORDINANCE SURVEY PLANS AND AS SUCH CANNOT BE HELD UPON FOR ACCURACY OF SITE DIMENSIONS. Client is responsible for defining the correct boundaries and site ownership to ABS Essex Ltd. ABS Essex Ltd cannot be held responsible for any subsequent land ownership disputes.